

# CUTTING WIRES



## Cutting wires

### Categories of cutting wires

We offer the largest range of brass and coated cutting wires. We sell quality branded European cutting wires (EDM TOP WIRE) plus top quality Asian versions. Our wires are not manufactured in China, Taiwan, Hong Kong or other Chinese territories.

Technologically, they are the simplest and the cheapest brass cutting wires. We supply them in the optimal composition **CuZn37** = 63% copper and 37% zinc. We do not sell depleted composition CuZn40 which contains only 60% of copper!!! Wires with a smaller copper content do not tolerate high current load, and this therefore decreases the cutting speed and increases its consumption.

The requirement for increased cutting speeds and greater productivity has seen much more interest on faster basic coated cutting wires but also for the advanced multiple coated wires for the fastest cutting capability.

► **Brass cutting wires CuZn37** (CuZn37 = optimal composition of brass cutting wires)

ELECUT BRASS CuZn37 in versions 980N, 500N and 390N

Branded EDM TOP BRASS-WIRE CuZn37 in versions 1000N, 900N, 500N and 390N

► **The basic coated cutting wires with brass core CuZn37**

= up to **20% faster** than brass cutting wires

Branded EDM TOP Z-WIRE in versions 900N, 800N and 500N

► **Cutting wires with brass core CuZn37 and with advanced multiple coatings**

= up to **30% faster** than brass cutting wires

ELECUT SUPER ZINC in versions 980N, 800N, 500N and 390N \*\*

Branded EDM TOP ZZ-WIRE in versions 900N, 800N, 500N a 390N \*\*

► **Cutting wires with brass core CuZn20 with high content of copper up to 80% and with advanced multiple coatings = up to **40% faster** than brass wires**

ELECUT D in version 800N \*\*\*

Branded EDM TOP D-WIRE in version 800N \*\*\*

► **Cutting wires with copper core Cu and with advanced multiple coatings**

= up to **40% faster** than brass wires

ELECUT X in version 500N \*\*\*\*

Branded EDM TOP X-WIRE in version 520N \*\*\*\*

► **Molybdenum wires for moly wire EDM**

We look forward to specifying the most appropriate cutting wires for your needs.

Comments:

\*\* Specially developed to achieve high cutting speeds and surface quality after cutting.

\*\*\* Specially developed to achieve maximum cutting speeds and surface quality after cutting.

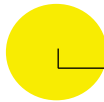
\*\*\*\* Specially developed to achieve maximum cutting speeds and surface quality after cutting  
Suitable for technologies and machines which require, resp. allow cutting with soft wire around 500N

## Cutting wires

### Brass cutting wire CuZn37

(CuZn37 = optimal composition of brass cutting wires)

Quality Asian cutting wire – High purity, paraffin-free and best-selling



CuZn37

### **ELECUT BRASS – brass cutting wire**

#### **ELECUT BRASS CuZn37 tensile strength 980 N/mm<sup>2</sup>**

Item No.	Diameter (mm)	Tensile strength (N/mm <sup>2</sup> )	Spool type	Amount of wire on the spool (kg)	Number of spools in package
291210	0,10	980	K125	3 / 3,5	1
291215	0,15	980	K125	3 / 3,5	1
291220	0,20	980	K125	3 / 3,5	6
291620	0,20	980	K160	7 / 8	2
292020	0,20	980	K200	16	1
290520	0,20	980	P5	5	4
291225	0,25	980	K125	3 / 3,5	6
291625	0,25	980	K160	7 / 8	2
292025	0,25	980	K200	16	1
290525	0,25	980	P5	5	4
291025	0,25	980	P10	10	2
291525	0,25	980	P15	20	1
291230	0,30	980	K125	3 / 3,5	6
291630	0,30	980	K160	7 / 8	2
292030	0,30	980	K200	16	1
290530	0,30	980	P5	5	4

#### **ELECUT BRASS CuZn37 tensile strength 500 N/mm<sup>2</sup>**

Item No.	Diameter (mm)	Tensile strength (N/mm <sup>2</sup> )	Spool type	Amount of wire on the spool (kg)	Number of spools in package
251210	0,10	500	K125	3 / 3,5	1
251215	0,15	500	K125	3 / 3,5	1
251220	0,20	500	K125	3 / 3,5	6
251620	0,20	500	K160	7 / 8	2
252020	0,20	500	K200	16	1
250520	0,20	500	P5	5	4
251225	0,25	500	K125	3 / 3,5	6
251625	0,25	500	K160	7 / 8	2
252025	0,25	500	K200	16	1
250525	0,25	500	P5	5	4
251025	0,25	500	P10	10	2
251525	0,25	500	P15	20	1
251230	0,30	500	K125	3 / 3,5	6
251630	0,30	500	K160	7 / 8	2
252030	0,30	500	K200	16	1
250530	0,30	500	P5	5	4

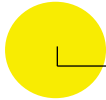
Information about delivery of other wire diameters, spool types, tensile strength, amount of wire on the spool and different composition (CuZn40, CuZn35, ...) are available on request.

## Cutting wires

### Brass cutting wires CuZn37

(CuZn37 = optimal composition of brass cutting wires)

European brand of high quality cutting wire – High purity, paraffin-free



CuZn37

### " EDM TOP BRASS-WIRE "

#### EDM TOP BRASS-WIRE CuZn37 tensile strength 900 N/mm<sup>2</sup>

Item No.	Diameter (mm)	Tensile strength (N/mm <sup>2</sup> )	Spool type	Amount of wire on the spool (kg)	Number of spools in package
191210	0,10	900	K125	3,5 / 4	1
191215	0,15	900	K125	3,5 / 4	1
191220	0,20	900	K125	3,5 / 4	4
191620	0,20	900	K160	7 / 8	2
192020	0,20	900	K200	16	1
190520	0,20	900	P5	5	2
191225	0,25	900	K125	3,5 / 4	4
191625	0,25	900	K160	7 / 8	2
192025	0,25	900	K200	16	1
190525	0,25	900	P5	5	2
191025	0,25	900	P10	10	2
191525	0,25	900	P15	20	1
191230	0,30	900	K125	3,5 / 4	4
191630	0,30	900	K160	7 / 8	2
192030	0,30	900	K200	16	1
190530	0,30	900	P5	5	2

#### EDM TOP BRASS-WIRE CuZn37 tensile strength 500 N/mm<sup>2</sup>

Item No.	Diameter (mm)	Tensile strength (N/mm <sup>2</sup> )	Spool type	Amount of wire on the spool (kg)	Number of spools in package
151210	0,10	500	K125	3,5 / 4	1
151215	0,15	500	K125	3,5 / 4	1
151220	0,20	500	K125	3,5 / 4	4
151620	0,20	500	K160	7 / 8	2
152020	0,20	500	K200	16	1
150520	0,20	500	P5	5	2
151225	0,25	500	K125	3,5 / 4	4
151625	0,25	500	K160	7 / 8	2
152025	0,25	500	K200	16	1
150525	0,25	500	P5	5	2
151025	0,25	500	P10	10	2
151525	0,25	500	P15	20	1
151230	0,30	500	K125	3,5 / 4	4
151630	0,30	500	K160	7 / 8	2
152030	0,30	500	K200	16	1
150530	0,30	500	P5	5	2

Information about delivery of other wire diameters, spool types, tensile strength, amount of wire on the spool and different composition (CuZn40, CuZn35, ...) are available on request.

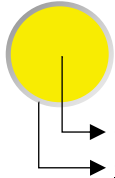
## Cutting wires

### The basic coated cutting wires with brass core CuZn37

up to 20% faster than brass wires

European brand of high quality cutting wire

### " EDM TOP Z-WIRE "



→ core: brass wire CuZn37

→ coating: zinc

- equivalent: Cobra Cut A, Cobra Cut, Thermo A, Alphacut 800, Alphacut 500 ...

#### EDM TOP Z-WIRE tensile strength 900 N/mm<sup>2</sup>

Item No.	Diameter (mm)	Tensile strength (N/mm <sup>2</sup> )	Spool type	Amount of wire on the spool (kg)	Number of spools in package
1191210	0,10	900	K125	3,5 / 4	1
1191215	0,15	900	K125	3,5 / 4	1
1191220	0,20	900	K125	3,5 / 4	4
1191620	0,20	900	K160	7 / 8	2
1192020	0,20	900	K200	16	1
1190520	0,20	900	P5	5	2
1191225	0,25	900	K125	3,5 / 4	4
1191625	0,25	900	K160	7 / 8	2
1192025	0,25	900	K200	16	1
1190525	0,25	900	P5	5	2
1191025	0,25	900	P10	10	2
1191525	0,25	900	P15	20	1
1191230	0,30	900	K125	3,5 / 4	4
1191630	0,30	900	K160	7 / 8	2
1192030	0,30	900	K200	16	1
1190530	0,30	900	P5	5	2

#### EDM TOP Z-WIRE tensile strength 500 N/mm<sup>2</sup>

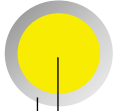
Item No.	Diameter (mm)	Tensile strength (N/mm <sup>2</sup> )	Spool type	Amount of wire on the spool (kg)	Number of spools in package
1151210	0,10	500	K125	3,5 / 4	1
1151215	0,15	500	K125	3,5 / 4	1
1151220	0,20	500	K125	3,5 / 4	4
1151620	0,20	500	K160	7 / 8	2
1152020	0,20	500	K200	16	1
1150520	0,20	500	P5	5	2
1151225	0,25	500	K125	3,5 / 4	4
1151625	0,25	500	K160	7 / 8	2
1152025	0,25	500	K200	16	1
1150525	0,25	500	P5	5	2
1151025	0,25	500	P10	10	2
1151525	0,25	500	P15	20	1
1151230	0,30	500	K125	3,5 / 4	4
1151630	0,30	500	K160	7 / 8	2
1152030	0,30	500	K200	16	1
1150530	0,30	500	P5	5	2

Information about delivery of other wire diameters, spool types, tensile strength, amount of wire on the spool are available on request.

## Cutting wires

### Cutting wires with brass core CuZn37 and with advanced multiple coatings

up to 30% faster than brass wires



#### "ELECUT SUPER ZINC " – the best-selling coated cutting wire

- core: brass wire CuZn37
- coating: multiple – zinc alloy with a content of copper-tungsten and precious metals
- equivalent: Topas Plus H,S, Gamma Z, Cobra Cut A, Cobra Cut, Thermo SA ...
- **To achieve high cutting speed and surface quality after cutting.**

#### ELECUT SUPER ZINC tensile strength 980 N/mm<sup>2</sup>

Item No.	Diameter (mm)	Tensile strength (N/mm <sup>2</sup> )	Spool type	Amount of wire on the spool (kg)	Number of spools in package
1891210	0,10	980	K125	3 / 3,5	1
1891215	0,15	980	K125	3 / 3,5	1
1891220	0,20	980	K125	3 / 3,5	6
1891620	0,20	980	K160	7 / 8	2
1892020	0,20	980	K200	16	1
1890520	0,20	980	P5	5	4
1891225	0,25	980	K125	3 / 3,5	6
1891625	0,25	980	K160	7 / 8	2
1892025	0,25	980	K200	16	1
1890525	0,25	980	P5	5	4
1891025	0,25	980	P10	10	2
1891525	0,25	980	P15	20	1
1891230	0,30	980	K125	3 / 3,5	6
1891630	0,30	980	K160	7 / 8	2
1892030	0,30	980	K200	16	1
1890530	0,30	980	P5	5	4

#### ELECUT SUPER ZINC tensile strength 500 N/mm<sup>2</sup>

Item No.	Diameter (mm)	Tensile strength (N/mm <sup>2</sup> )	Spool type	Amount of wire on the spool (kg)	Number of spools in package
1851210	0,10	500	K125	3 / 3,5	1
1851215	0,15	500	K125	3 / 3,5	1
1851220	0,20	500	K125	3 / 3,5	6
1851620	0,20	500	K160	7 / 8	2
1852020	0,20	500	K200	16	1
1850520	0,20	500	P5	5	4
1851225	0,25	500	K125	3 / 3,5	6
1851625	0,25	500	K160	7 / 8	2
1852025	0,25	500	K200	16	1
1850525	0,25	500	P5	5	4
1851025	0,25	500	P10	10	2
1851525	0,25	500	P15	20	1
1851230	0,30	500	K125	3 / 3,5	6
1851630	0,30	500	K160	7 / 8	2
1852030	0,30	500	K200	16	1
1850530	0,30	500	P5	5	4

Information about delivery of other wire diameters, spool types, tensile strength, amount of wire on the spool are available on request.

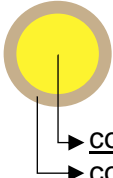
## Cutting wires

### Cutting wires with brass core CuZn37 and with advanced multiple coatings

up to 30% faster than brass wires

European brand of high quality cutting wire

### " EDM TOP ZZ-WIRE "



- core: brass wire CuZn37
- coating: multiple – copper-tungsten and precious metals alloys
- equivalent: Topas Plus H,S, Cobra Cut A, Cobra Cut, Thermo SA ...
- **To achieve high cutting speed and surface quality after cutting.**

#### EDM TOP-ZZ WIRE tensile strength 900 N/mm<sup>2</sup>

Item No.	Diameter (mm)	Tensile strength	Spool type	Amount of wire on the spool (kg)	Number of spools in package
1691210	0,10	900	K125	3,5 / 4	1
1691215	0,15	900	K125	3,5 / 4	1
1691220	0,20	900	K125	3,5 / 4	4
1691620	0,20	900	K160	7 / 8	2
1692020	0,20	900	K200	16	1
1690520	0,20	900	P5	5	2
1691225	0,25	900	K125	3,5 / 4	4
1691625	0,25	900	K160	7 / 8	2
1692025	0,25	900	K200	16	1
1690525	0,25	900	P5	5	2
1691025	0,25	900	P10	10	2
1691525	0,25	900	P15	20	1
1691230	0,30	900	K125	3,5 / 4	4
1691630	0,30	900	K160	7 / 8	2
1692030	0,30	900	K200	16	1
1690530	0,30	900	P5	5	2

#### EDM TOP-ZZ WIRE tensile strength 500 N/mm<sup>2</sup>

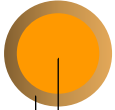
Item No.	Diameter (mm)	Tensile strength	Spool type	Amount of wire on the spool (kg)	Number of spools in package
1651210	0,10	500	K125	3,5 / 4	1
1651215	0,15	500	K125	3,5 / 4	1
1651220	0,20	500	K125	3,5 / 4	4
1651620	0,20	500	K160	7 / 8	2
1652020	0,20	500	K200	16	1
1650520	0,20	500	P5	5	2
1651225	0,25	500	K125	3,5 / 4	4
1651625	0,25	500	K160	7 / 8	2
1652025	0,25	500	K200	16	1
1650525	0,25	500	P5	5	2
1651025	0,25	500	P10	10	2
1651525	0,25	500	P15	20	1
1651230	0,30	500	K125	3,5 / 4	4
1651630	0,30	500	K160	7 / 8	2
1652030	0,30	500	K200	16	1
1650530	0,30	500	P5	5	2

Information about delivery of other wire diameters, spool types, tensile strength, amount of wire on the spool are available on request.

## Cutting wires

### Cutting wires with brass core CuZn20 with high content of copper up to 80% and with advanced multiple coatings

up to 40 faster than brass wires



### " ELECUT D "

- core: brass wire CuZn20 with high content of copper up to 80%
- coating: multiple – copper-tungsten and precious metals alloy
- equivalent: Topas Plus D, Cobra Cut D, Cobra Cut S, Cobra Cut V, Megacut D, Megacut HS, Thermo D, Alphacut D ...
- **To achieve maximum cutting speed and surface quality after cutting.**

#### ELECUT D tensile strength 800 N/mm<sup>2</sup>

Item No.	Diameter (mm)	Tensile strength (N/mm <sup>2</sup> )	Spool type	Amount of wire on the spool (kg)	Number of spools in package
1381210	0,10	800	K125	3,5 / 4	1
1381215	0,15	800	K125	3,5 / 4	1
1381220	0,20	800	K125	3,5 / 4	4
1381620	0,20	800	K160	7 / 8	2
1382020	0,20	800	K200	16	1
1380520	0,20	800	P5	5	2
1381225	0,25	800	K125	3,5 / 4	4
1381625	0,25	800	K160	7 / 8	2
1382025	0,25	800	K200	16	1
1380525	0,25	800	P5	5	2
1381025	0,25	800	P10	10	2
1381525	0,25	800	P15	20	1
1381230	0,30	800	K125	3,5 / 4	4
1381630	0,30	800	K160	7 / 8	2
1382030	0,30	800	K200	16	1
1380530	0,30	800	P5	5	2

Information about delivery of other wire diameters, spool types, tensile strength, amount of wire on the spool are available on request.



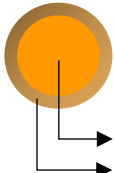
## Cutting wires

### Cutting wires with brass core CuZn20 with high content of copper up to 80% and with advanced multiple coatings

up to 40% faster than brass wires

European brand of high quality cutting wire

### " EDM TOP D-WIRE "



- core: brass wire CuZn20 with high content of copper up to 80%
- coating: multiple – copper-tungsten and precious metals alloy
- equivalent: Topas Plus D, Cobra Cut D, Cobra Cut S, Cobra Cut V, Megacut D, Megacut HS, Thermo D, Alphacut D ...
- **To achieve maximum cutting speed and surface quality after cutting.**

#### EDM TOP D-WIRE tensile strength 800 N/mm<sup>2</sup>

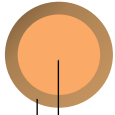
Item No.	Diameter (mm)	Tensile strength (N/mm <sup>2</sup> )	Spool type	Amount of wire on the spool (kg)	Number of spools in package
1481210	0,10	800	K125	3,5 / 4	1
1481215	0,15	800	K125	3,5 / 4	1
1481220	0,20	800	K125	3,5 / 4	4
1481620	0,20	800	K160	7 / 8	2
1482020	0,20	800	K200	16	1
1480520	0,20	800	P5	5	2
1481225	0,25	800	K125	3,5 / 4	4
1481625	0,25	800	K160	7 / 8	2
1482025	0,25	800	K200	16	1
1480525	0,25	800	P5	5	2
1481025	0,25	800	P10	10	2
1481525	0,25	800	P15	20	1
1481230	0,30	800	K125	3,5 / 4	4
1481630	0,30	800	K160	7 / 8	2
1482030	0,30	800	K200	16	1
1480530	0,30	800	P5	5	2

Information about delivery of other wire diameters, spool types, tensile strength, amount of wire on the spool are available on request.

## Cutting wires

### Cutting wires with copper core Cu and with advanced multiple coatings

up to 40% faster than brass wires



### " ELECUT X "

- ▶ core: pure copper wire Cu
- ▶ coating: multiple – copper-tungsten and precious metals alloy
- equivalent: Topas Plus X, Bronco Cut X, Thermo X, SWX, BetaCut X ...
- **To achieve maximum cutting speed and surface quality after cutting.**

#### ELECUT X tensile strength 500 N/mm<sup>2</sup>

Item No.	Diameter (mm)	Tensile strength (N/mm <sup>2</sup> )	Spool type	Amount of wire on the spool (kg)	Number of spools in package
1951210	0,10	500	K125	3,5 / 4	1
1951215	0,15	500	K125	3,5 / 4	1
1951220	0,20	500	K125	3,5 / 4	4
1951620	0,20	500	K160	7 / 8	2
1952020	0,20	500	K200	16	1
1950520	0,20	500	P5	5	2
1951225	0,25	500	K125	3,5 / 4	4
1951625	0,25	500	K160	7 / 8	2
1952025	0,25	500	K200	16	1
1950525	0,25	500	P5	5	2
1951025	0,25	500	P10	10	2
1951525	0,25	500	P15	20	1
1951230	0,30	500	K125	3,5 / 4	4
1951630	0,30	500	K160	7 / 8	2
1952030	0,30	500	K200	16	1
1950530	0,30	500	P5	5	2

Information about delivery of other wire diameters, spool types, tensile strength, amount of wire on the spool are available on request.

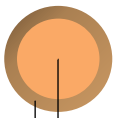
## Cutting wires

### Cutting wires with copper core Cu and with advanced multiple coatings

up to 40% faster than brass wires

European brand of high quality cutting wire

### " EDM TOP X-WIRE "



→ core: pure copper wire Cu

→ coating: multiple – copper-tungsten and precious metals alloy

- equivalent: Topas Plus X, Bronco Cut X, Thermo X, SWX, BetaCut X ...

- **To achieve maximum cutting speed and surface quality after cutting.**

### EDM TOP-X WIRE tensile strength 520 N/mm<sup>2</sup>

Item No.	Diameter (mm)	Tensile strength (N/mm <sup>2</sup> )	Spool type	Amount of wire on the spool (kg)	Number of spools in package
1751210	0,10	520	K125	3,5 / 4	1
1751215	0,15	520	K125	3,5 / 4	1
1751220	0,20	520	K125	3,5 / 4	4
1751620	0,20	520	K160	7 / 8	2
1752020	0,20	520	K200	16	1
1750520	0,20	520	P5	5	2
1751225	0,25	520	K125	3,5 / 4	4
1751625	0,25	520	K160	7 / 8	2
1752025	0,25	520	K200	16	1
1750525	0,25	520	P5	5	2
1751025	0,25	520	P10	10	2
1751525	0,25	520	P15	20	1
1751230	0,30	520	K125	3,5 / 4	4
1751630	0,30	520	K160	7 / 8	2
1752030	0,30	520	K200	16	1
1750530	0,30	520	P5	5	2

Information about delivery of other wire diameters, spool types, tensile strength, amount of wire on the spool are available on request.

## Cutting wires

### Wire tension meters



Item No.: Wire tension meter with pointer

#### **Portable wire tension meter with pointer**

- For EDM wire cutters  
Measuring range: 100-3000g(cN)



Item No.: Digital wire tension meter

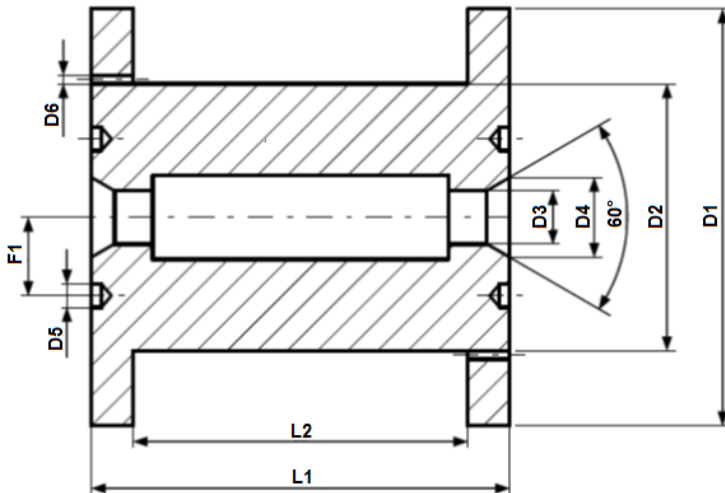
#### **Portable digital wire tension meter**

- For EDM wire cutters  
Measuring range: 50-5000g(cN)

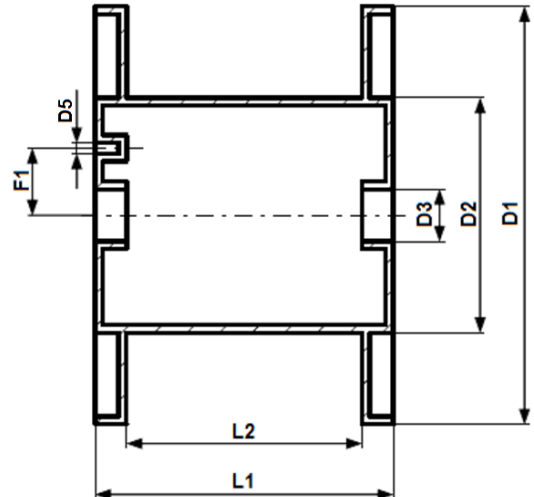
## Cutting wires

### Basic spools types

Spool type K (DIN)



Spool type P



Units: mm

Spool type	D1	D2	D3	D4	D5	D6	F1	L1	L2	Weight of wire
<b>K100 (DIN100)</b>	100	63	16	-	-	-	-	100	80	1,6 kg
<b>K125 (DIN125)</b>	125	80	16	24	7	3	20	125	100	3,5 / 4 kg
<b>K160 (DIN160)</b>	160	100	22	34	13	3	32	160	128	7 / 8 kg
<b>K200 (DIN200)</b>	200	125	22	34	13	3	32	200	160	16 kg
<b>K250 (DIN250)</b>	250	160	22	-	-	-	-	200	160	25 kg
<b>K355 (DIN355)</b>	355	224	36	-	-	-	-	200	160	45 kg
<b>P3</b>	130	81	20	-	-	-	-	110	90	3 kg
<b>P5</b>	160	90	20	-	-	-	-	115	90	5 kg
<b>P10</b>	200	90	25	-	-	-	-	134	110	10 kg
<b>P15</b>	250	110	34	-	-	-	-	140	110	20 kg

We look forward to specifying the most appropriate cutting wires for your needs.